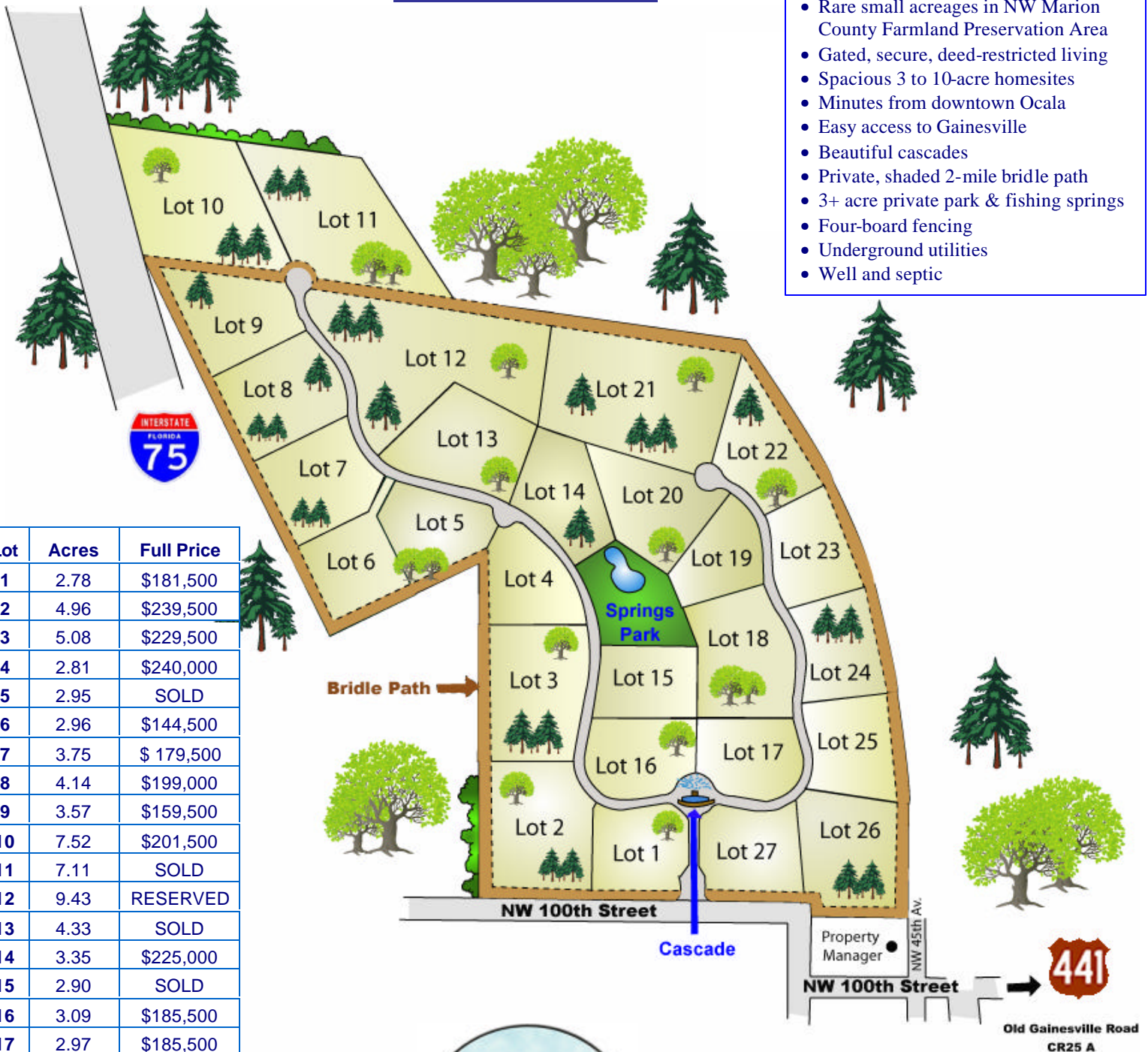


# PRICE LIST

## Special Features

- Rare small acreages in NW Marion County Farmland Preservation Area
- Gated, secure, deed-restricted living
- Spacious 3 to 10-acre homesites
- Minutes from downtown Ocala
- Easy access to Gainesville
- Beautiful cascades
- Private, shaded 2-mile bridle path
- 3+ acre private park & fishing springs
- Four-board fencing
- Underground utilities
- Well and septic



Lot	Acres	Full Price
1	2.78	\$181,500
2	4.96	\$239,500
3	5.08	\$229,500
4	2.81	\$240,000
5	2.95	SOLD
6	2.96	\$144,500
7	3.75	\$ 179,500
8	4.14	\$199,000
9	3.57	\$159,500
10	7.52	\$201,500
11	7.11	SOLD
12	9.43	RESERVED
13	4.33	SOLD
14	3.35	\$225,000
15	2.90	SOLD
16	3.09	\$185,500
17	2.97	\$185,500
18	4.67	RESERVED
19	2.59	\$199,500
20	4.02	\$225,000
21	9.05	\$286,500
22	3.47	RESERVED
23	2.89	\$163,000
24	2.88	\$163,000
25	3.26	\$171,000
26	4.19	\$175,000
27	2.96	\$188,500

**COMMON AREAS**  
 Bridle Path : 11.72 acres  
 Pond/Park area: 3.21 acres



**\*Call for pre-construction pricing & rapid building rebate.**

For More Information, Please Call:

**AL** (877) OWN LAND  
 (877) 696 - 5263  
**Hellena** (352) 875 - 8156

[www.EquestrianSprings.com](http://www.EquestrianSprings.com)